

TAWA IMAGES

Series 2

This is the second in the series of images There are 52 images in series two and 34 in series one.

The images are all from the National Library of New Zealand. You can copy this item for personal use, share it, and post it on a blog or website. It cannot be used commercially without permission, please If reproducing this item, please maintain the integrity of the image (i.e. don't crop, recolour or overprint it), and ensure the following credit accompanies it:

There is first a list of contents on the first four pages followed by the images starting on page five each with detail of the image and hyperlinks

Steve Avery 14 2 26 2026 Tawa Historical Society

Contents

- 5 Date 1929 By Hammond, R. B. (Reginald Bedford), 1894-1970; Hunt, A. Leigh (Arthur Leigh), 1876-1968 Notes Inset: Locality plan.
- 6 ALL THAT IS LEFT OF TAWA FLAT POST OFFICE. — A fire completely destroyed the store and Post Office at Tawa Flat.
- 7 Glenside, Wellington, November 1930, looking over the construction works for the Tawa Deviation of the North Island Main Trunk.
- 8 1932 "LAST POST" AT YESTERDAY'S FUNERAL the Legion of Frontiersmen, standing at attention, outside the Crematorium at Karori Cemetery yesterday afternoon at the funeral of Messrs. F. Gresser and G. B. S. King, killed at Tawa Flat on Tuesday in an aeroplane crash.
- 9 PROGRESS AT A GLANCE —The above plans will assist to elucidate the progress report on the Tawa Flat tunnels on this page. Evening Post, 08 October 1931.
- 10 Construction of the main trunk railway line 1935
- 11 Construction of the main trunk railway line, Tawa Flat, Wellington. Looking into the city portal of No. 1 tunnel 1935.

- 12 Women's Borstal, near Tawa Flat, which is expected to be put into use during the next few weeks. 1944.
- 13 Men gathering hay on a horse-drawn float at Tawa flat ca 1940s.
- 14 1953 Mexted's shearing shed below Hampton Hill.
- 15 Date 1955 Advert by R.G. Mexted & Son; Wiren, Ronayne & Burns 35 industrial sites
- 16 Schoolboys with photographs preparing for Tawa Flat Centennial 1955
- 17 Ninety-year old Macrocarpa tree at Tawa Flat, Wellington Bucket Tree 1955
- 18 Salvation Army Band, Tawa, Wellington 1956
- 19 Tawa Flat Borough Council 1956
- 20 Street scene on a busy Saturday in Tawa 1957
- 21 Street scene on a Saturday in Tawa 1957
- 22 Motorway 1958
- 23 Tawa flat development and housing 1958
- 24 Lamphouse shop 1958
- 25 Voting at Tawa Flat 1958
- 26 Scottish dancers at Tawa Flat 1958
- 27 Scottish dancers and pipers at Tawa Flat 1958
- 28 Tawa Flat citizens, Wellington, preparing site for skating rink 1958
- 29 Children paddling in waterfilled Tawa Flat skating rink during construction 1959
- 30 Architectural model of Tawa College 29 Oct 1959
- 31 Tawa Hockey Club, Wellington, 2nd division, boys' hockey team of 1959
- 32 Tin drums being sprayed in a drum factory, Tawa, Wellington 25 Nov 1959
- 33 Men making tin drums at a factory, Tawa, Wellington 25 Nov 1959
- 34 Portrait of unidentified Tawa Borough Councillors 1959
- 35 Tawa Rugby Football Club, Wellington, team of 1960
- 36 Mormon Latter Day Saints house Duncan Street 1960
- 37 Tawa Cricket Club Team 1960

- 38 Partons New machines at Tawa factory 1963
- 39 [Captain?] of the Tawa Rugby Football Club 1964
- 40 Tawa Cricket Club A grade 1965-1966
- 41 Jantzen Factory between ca 1962 and 1965
- 42 Jantzen Factory between ca 1962 and 1965
- 43 Business of Alex Cowan & Sons Limited ca 1962 and 1965
- 44 Business of Alex Cowan & Sons Limited ca 1962 and 1965
- 45 Business of Alex Cowan & Sons Limited ca 1962 and 1965
- 46 Interior of Carter Merchants between ca 1962 and 1970
- 47 Fletcher Construction Plant at Tawa 1967
- 48 Fletcher Construction Plant at Tawa 1967
- 49 Wallace house 1969
- 50 Tawa College, 1969 1st XV rugby union team
- 51 St. Christophers 1970
- 52 Catholic church 1970
- 53 Blind Institute 1973
- 54 Tawa College, Wellington, 1st XI cricket team 1973
- 55 Date 1977. By New Zealand. Department of Lands and Survey; New Zealand. Department of Statistics Series NZMS 92 ; 36.

Archived copy available at the National Library of New Zealand



"Evening Post" Photo.

[ALL THAT IS LEFT OF TAWA FLAT POST OF... | Items | National Library of New Zealand | National Library of New Zealand](#) ALL THAT IS LEFT OF TAWA FLAT POST OFFICE.—'A fire completely destroyed the store and Post Office at Tawa Flat in the early hours of this morning, leaving only live chimney slacks standing as shown in the photograph. For a telephonic communication was interrupted in this direction , owing to the fusing of the wires by the heat. (Evening Post, 06 May 1930) **Date** 06-05-1930 **Publisher** Evening Post



[Glenside, Wellington, including the W... | Items | National Library of New Zealand | National Library of New Zealand](#) **Date** Nov 1930 **Reference** 1/2-026823-F **Description**

Glenside, Wellington, November 1930, looking over the construction works for the Tawa Deviation of the North Island Main Trunk. Looking across to the Wellington-Manawatu line, which the deviation would replace: smoke from a Wellington-bound steam train on that line is clearly visible in the top left of the photo. Middleton Rd is on the right, the north portal of NIMT tunnel no. 2 concealed by a tree in the centre, and on the left is a construction tramway along the course of Rowells Rd..

Photograph taken by an Evening **Part of** [Evening post \(Newspaper. 1865-2002\)](#)

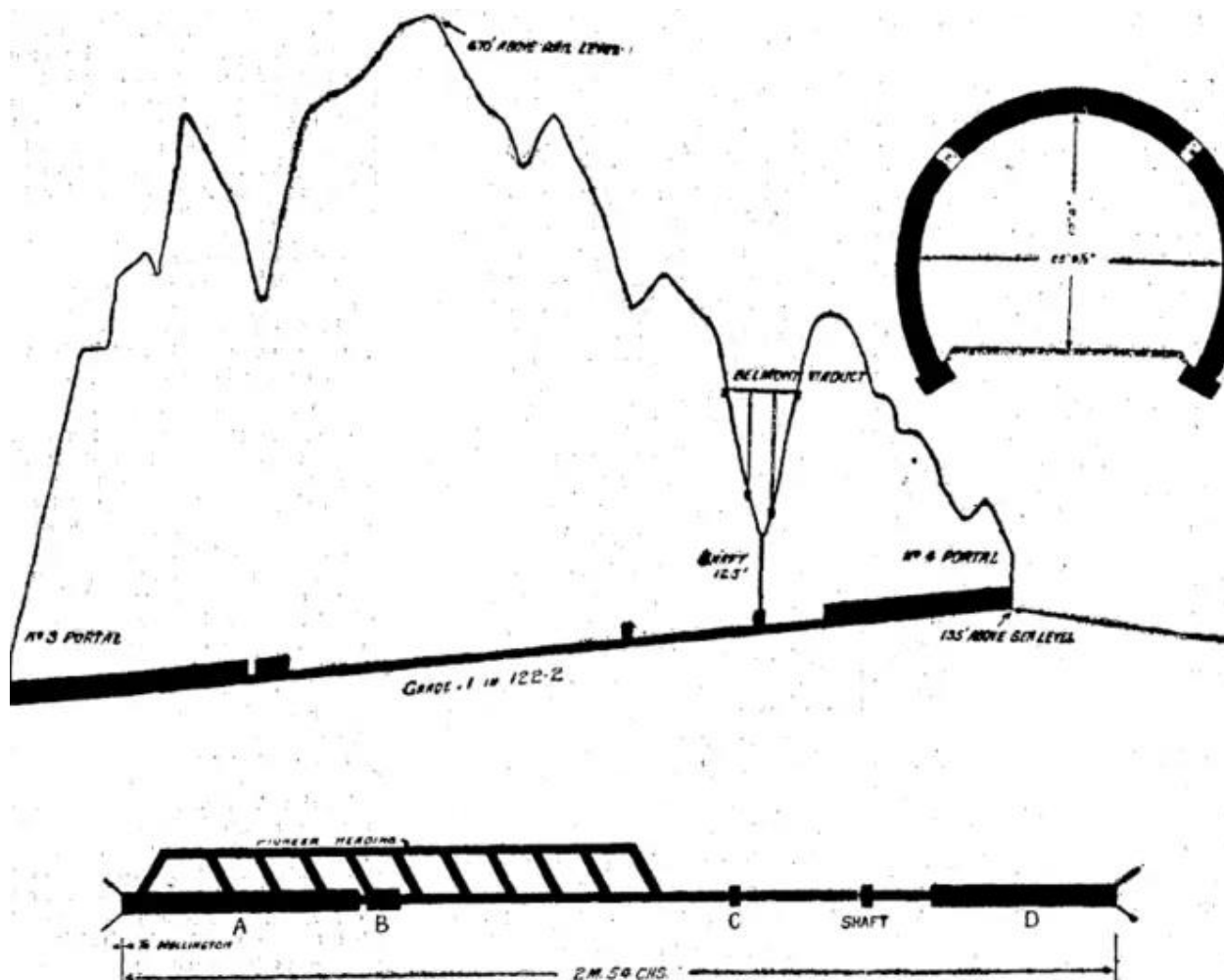
[:Photographic negatives and prints of the Evening Post newspaper / Negatives of the Evening Post newspaper](#)



[Evening Post Photo. "LAST POST" AT Y... | Items | National Library of New Zealand |](#)

[National Library of New Zealand](#) **Date** 29-10-1932 **Publisher** Evening Post **Evening**

Post" Photo. "LAST POST" AT YESTERDAY'S FUNERAL. Bugler blowing the "Last Post," the Legion of Frontiersmen, standing at-attention, outside the- Crematorium at Karon Cemetery yesterday afternoon at the funeral of Messrs. F. Gresser and G. B. S. King, killed at Tawa. Flat on Tuesday in an aeroplane crash. Inset, floral tributes in the form of aeroplanes. (Evening Post, 29 October 1932). Alexander Turnbull Library, Wellington, New Zealand. [/records/19690494](#)



[PROGRESS AT A GLANCE –The above plans... | Items | National Library of New](#)

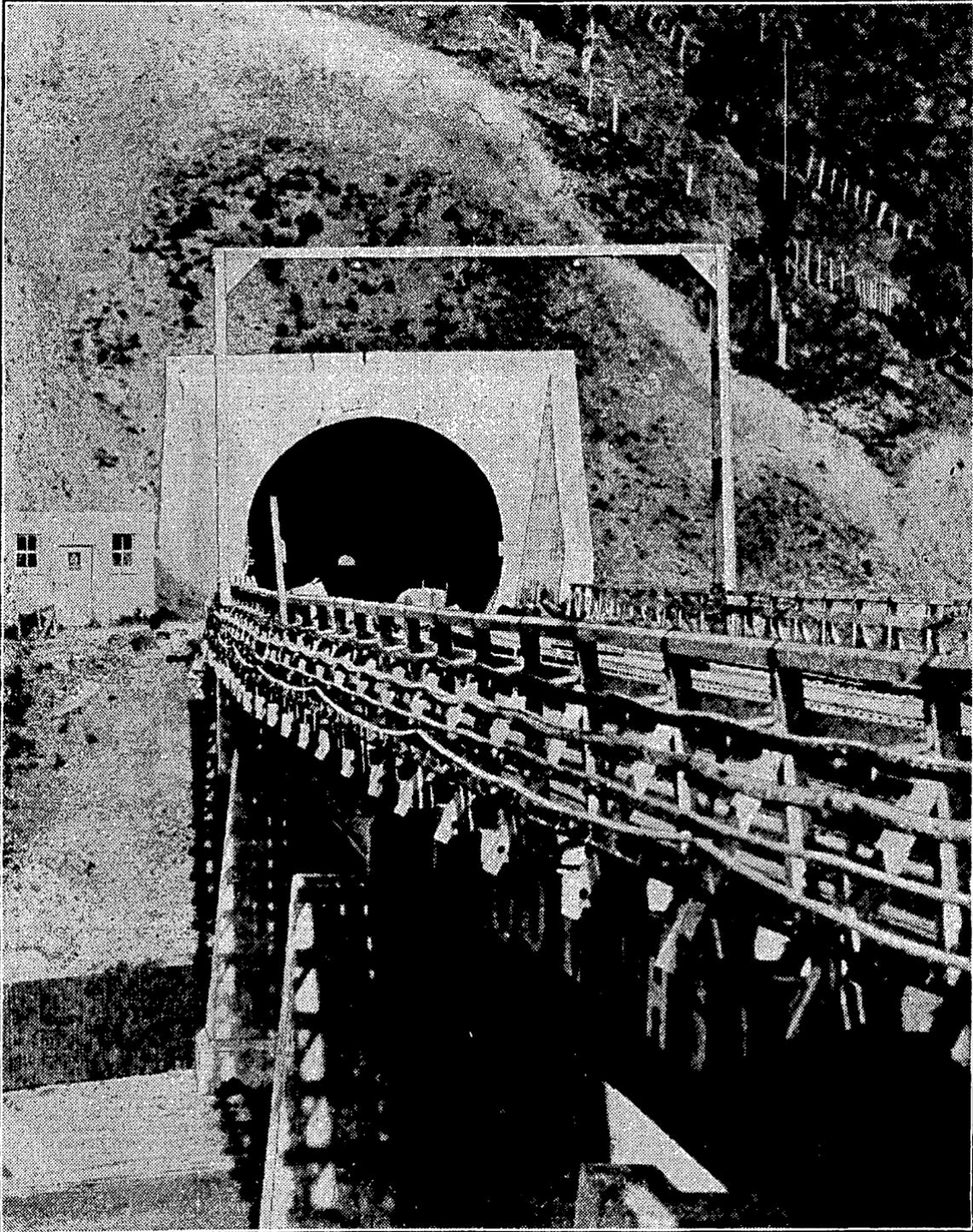
[Zealand | National Library of New Zealand](#) Date Shows some men gathering hay on a horse-drawn float at Tawa flat.

PROGRESS AT A GLANCE —The above plans will assist to elucidate the progress report on the Tawa Flat tunnels on this page. One point which is clearly made is that the new rail level is 250 feet below that of the old line at the viaduct, while the highest point of the surface is 650 feet above the new rail level. (Evening Post, 08 October 1931).

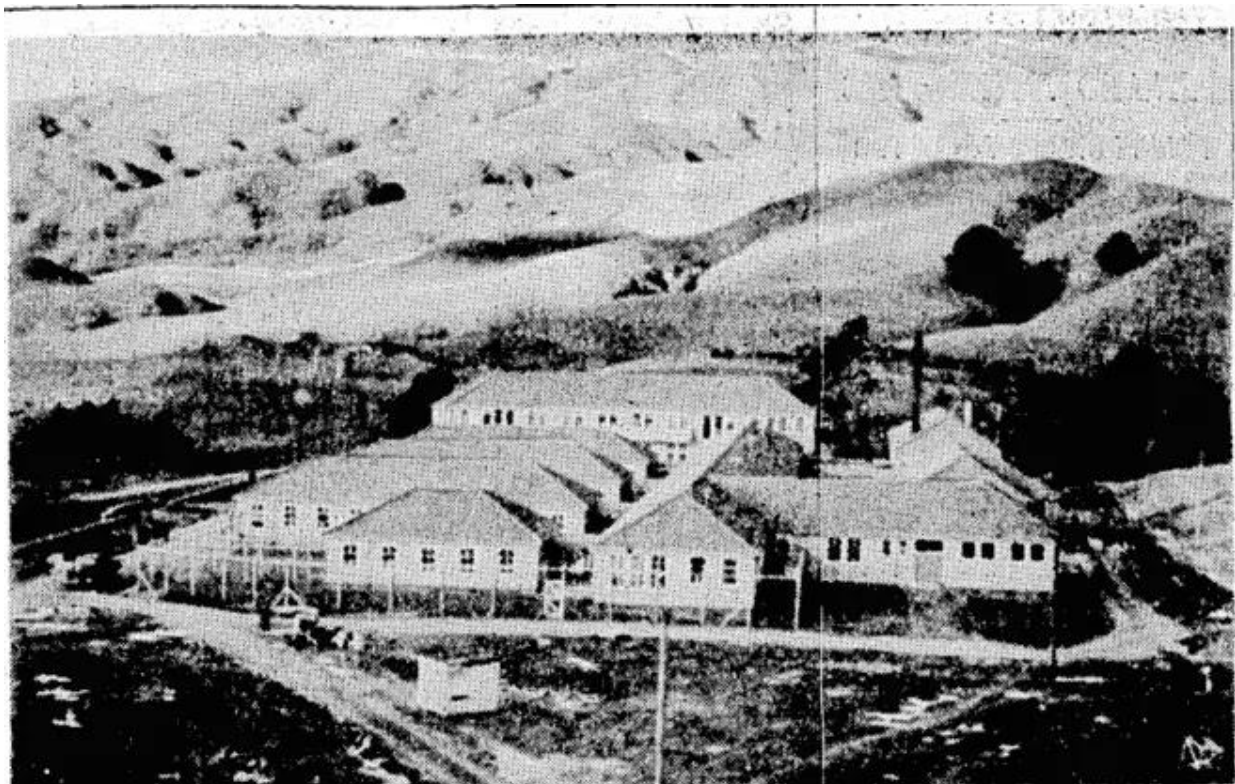


[Construction of the main trunk railway... | Items | National Library of New Zealand | National Library of New Zealand](#) Construction of the main trunk railway line, Tawa Flat, Wellington

Date [ca 1935] **Reference** 1/2-109160-F **Description** Photographer unidentified.
Alexander Turnbull Library, Wellington, New Zealand. [/records/17016527](#)



[b2IkPUVQMTkzNTA3MTcuMS45JmNyb3A9ODc4LDM1MzcsMTk5NiwyNTI0JmNvbG9yPTMyJmV4dD1naWYma2V5 \(1996x2524\)](#) Evening Post" Photo. ENTRY-AND- EXIT OF THE FIRST TAWA FLAT TUNNEL.—Looking into the city portal of No. 1 tunnel of the Tawa Flat Deviation with the exit in Ngahauranga Gorge visible three-quarters of a mile away (Evening Post, 17 July 1935)



The new Women's Borstal, near Tawa Flat, which is expected to be put into use during the next few weeks. (Evening Post, 27 May 1944) [The new Women's Borstal, near Tawa Fl... | Items | National Library of New Zealand | National Library of New Zealand](#)



[Haymaking at Tawa Flat | Items | National Library of New Zealand | National Library of New Zealand](#) **Date** [ca 1940s] **Reference** PAColl-3082-03 **Description** Shows some men gathering hay on a horse-drawn float at Tawa flat. A horse with a rake attached is standing on the right. Photograph taken by Sydney Charles Smith ca 1940s. Quantity: 1 b&w original photographic print(s). **Part of** [Smith, Sydney Charles, 888-1972: Photographs of New Zealand](#)



[Mexted's shearing shed below Hampton ... | Items | National Library of New Zealand | National Library of New Zealand](#) **Date** December 1953 **Reference** PAColl-5584-49

Description

Shows Mexted's shearing shed below Hampton Hill. Photograph taken by an unidentified photographer in December 1953. **Part of** [Original photographic prints and postcards from file print collection, Box 2](#)

35 VALUABLE INDUSTRIAL SITES 35

Fronting Tawa Flat - Porirua Main Highway
(James Wall Estate)

LARGE LEVEL SECTIONS
Areas from $\frac{1}{4}$ acre to 2 acres, approximately

To Be Offered By
Public Auction
on **THURSDAY Nov. 10th 1955**
at 2-30 p.m.

At the Dominion Farmers' Institute Buildings
Conference Hall, Featherston Street Wellington

Notes: All distances are shown in ticks.

Terms of Sale:
10% on fall of hammer,
10% in one month, and
10% in six months.
Balance in four years.

All unpaid purchase money bearing interest 5% with right of repayment of whole or part at any time.

Situation handy to Linden and Porirua built-up areas, and there is a proposed Government housing area adjoining.

Further Particulars
R. G. Mexted & Son
Auctioneers
151 LAMETON QUAY, WELLINGTON. PHONE 64-415.

or Messrs. Wren, Ronayne & Burns
BARRISTERS AND SOLICITORS
N.Z. Insurance Co. Bldg.,
Featherston Street, Wellington.

[35 valuable industrial sites fronting... | Items | National Library of New Zealand | National Library of New Zealand](#) Date 1955 By R.G. Mexted & Son; Wren, Ronayne & Burns



Schoolboys with photographs preparing for Tawa Flat Centennial 1955 **Reference** EP/1955/2376-F **Description** Photograph taken for the Evening Post newspaper of Wellington by an unidentified staff photographer. **Part of** [Evening post \(Newspaper. 1865-2002\) :Photographic negatives and prints of the Evening Post newspaper / Negatives of the Evening Post newspaper](#)



Ninety-year old Macrocarpa tree at Tawa Flat, Wellington [Ninety-year old Macrocarpa tree at Ta... | Items | National Library of New Zealand | National Library of New Zealand](#) **Date** 1955 **Reference** EP/1955/2386-F**Part of** [Evening post \(Newspaper. 1865-2002\)](#) :[Photographic negatives and prints of the Evening Post newspaper](#) / [Negatives of the Evening Post newspaper](#)



[Salvation Army Band, Tawa, Wellington | Items | National Library of New Zealand](#)
[National Library of New Zealand](#) Salvation Army Band, Tawa, Wellington **Date** 1956
Reference 1/1-034890-F **Description** Photograph taken by Crown Studios of Wellington.



Tawa Flat Borough Council Wellington [Tawa Flat Borough Council Wellington | Items | National Library of New Zealand | National Library of New Zealand](#) **Date** 1956 **Part of**

[Crown Studios Ltd :Negatives and prints](#)



Street scene on a busy Saturday in Tawa, Wellington [Street scene on a busy Saturday in Ta... | Items | National Library of New Zealand | National Library of New Zealand](#) **Date** 1957 **Reference** EP/1957/3074a-F **Part of** [Evening post \(Newspaper. 1865-2002\) :Photographic negatives and prints of the Evening Post newspaper / Negatives of the Evening Post newspaper](#)



Street scene on a Saturday in Tawa, Wellington **Date** 1957 **Reference**

EP/1957/3074b-F **Part of** [Evening post \(Newspaper. 1865-2002\)](#) :Photographic negatives and prints of the Evening Post newspaper / [Negatives of the Evening Post newspaper](#)



[View of the Porirua-Johnsonville Moto... | Items | National Library of New Zealand | National Library of New Zealand](#) **Date** 27 Aug 1958 **Reference** WA-47278-F **Physical Description:** Cellulosic film negative, 1/2 plate **Part of** [Whites Aviation Ltd: Photographs](#) / [Whites Aviation Ltd :Photographs](#)



[Tawa flat development and housing | Items | National Library of New Zealand | National Library of New Zealand](#) Tawa flat development and housing **Date** 7 Aug 1958

Reference EP/1958/2598-F **Description** Photograph taken for the Evening Post newspaper of Wellington by an unidentified staff photographer. Quantity: 1 b&w original negative(s). **Part of** [Evening post \(Newspaper. 1865-2002\) :Photographic negatives and prints of the Evening Post newspaper / Negatives of the Evening Post newspaper](#)



[Lamphouse shop, Tawa Flat, Wellington... | Items | National Library of New Zealand](#)

[| National Library of New Zealand](#) Date 1958 Reference EP/1958/1462-F

Description

Photograph taken for the Evening Post. **Part of** [Evening post \(Newspaper. 1865-2002\)](#) :Photographic negatives and prints of the Evening Post newspaper / [Negatives of the Evening Post newspaper](#)



[Voting at Tawa Flat | Items | National Library of New Zealand | National Library of New Zealand](#) **Date** 7 Jun 1958 **Reference** EP/1958/1825-F **Description** Photograph taken for the Evening Post newspaper of Wellington by an unidentified staff photographer.

Quantity: 1 b&w original negative(s). **Part of** [Evening post \(Newspaper. 1865-2002\)](#) :[Photographic negatives and prints of the Evening Post newspaper](#) / [Negatives of the](#)



Scottish dancers at Tawa Flat, Wellington [Scottish dancers at Tawa Flat, Wellin... | Items | National Library of New Zealand | National Library of New Zealand](#) **Date** 28 Oct 1958 **Reference** EP/1958/3655-F **Part of** [Evening post \(Newspaper. 1865-2002\)](#) :[Photographic negatives and prints of the Evening Post newspaper](#) / [Negatives of the Evening Post newspaper](#)



Scottish dancing and pipers at Tawa Flat, Wellington **Date** 28 Oct 1958 **Reference** EP/1958/3654-F **Part of** [Evening post \(Newspaper. 1865-2002\)](#) :Photographic negatives and prints of the Evening Post newspaper / [Negatives of the Evening Post newspaper](#)



[Tawa Flat citizens, Wellington, prepara... | Items | National Library of New Zealand | National Library of New Zealand](#) Tawa Flat citizens, Wellington, preparing site for

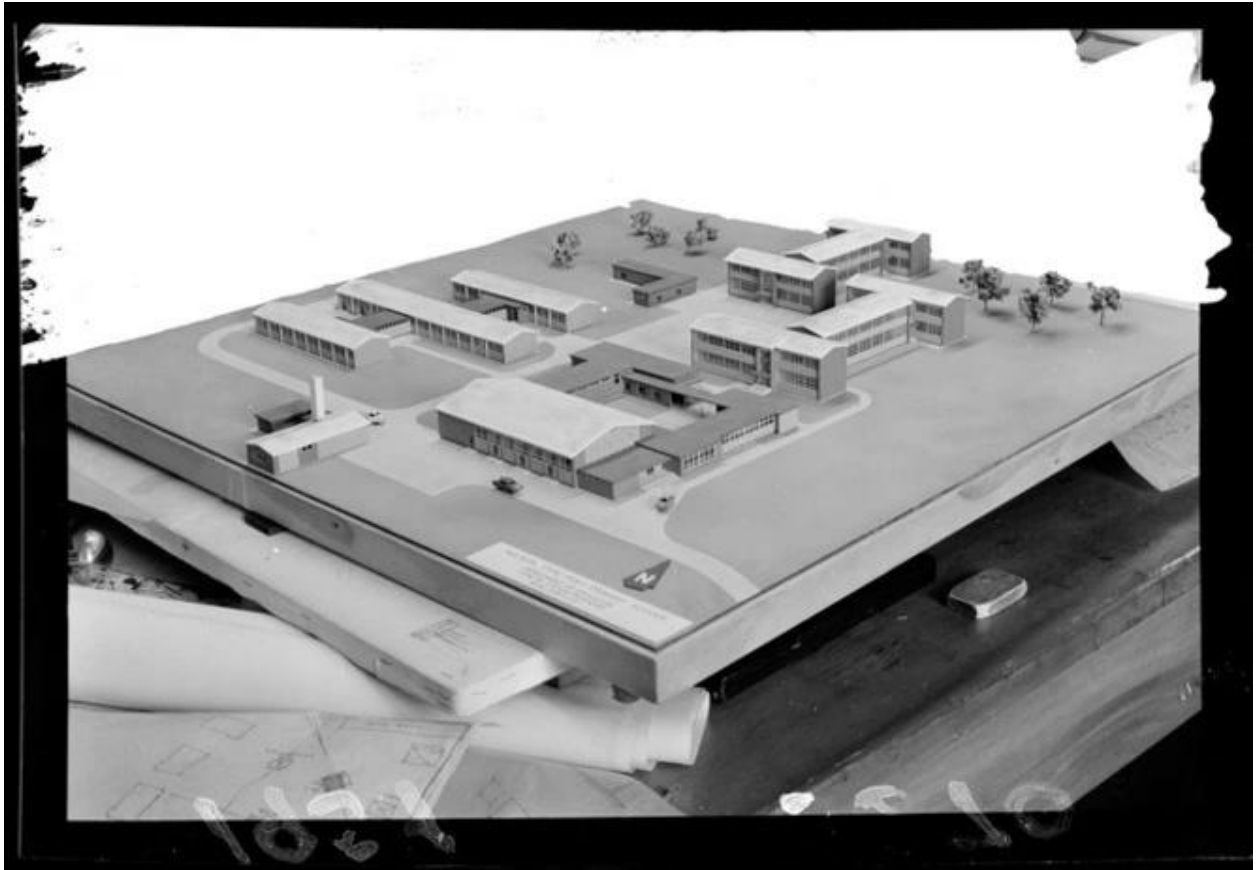
skating rink **Date** 1 Nov 1958 **Reference**

EP/1958/3733-F **Part of** [Evening post \(Newspaper. 1865-2002\)](#) :Photographic

[negatives and prints of the Evening Post newspaper](#) / [Negatives of the Evening Post newspaper](#)



Children paddling in waterfilled Tawa Flat skating rink during construction [Children paddling in waterfilled Tawa... | Items | National Library of New Zealand | National Library of New Zealand](#) **Date** 10 Jan 1959 **Reference** EP/1959/0113-F **Description** Photograph taken for the Evening Post newspaper of Wellington by an unidentified staff **Part of** [Evening post \(Newspaper. 1865-2002\) :Photographic negatives and prints of the Evening Post newspaper](#)



Architectural model of Tawa College [Architectural model of Tawa College | Items | National Library of New Zealand | National Library of New Zealand](#) **Date** 29 Oct 1959

Reference EP/1959/3670-F **Part of** [Evening post \(Newspaper. 1865-2002\)](#)
:Photographic negatives and prints of the Evening Post newspaper / [Negatives of the Evening Post newspaper](#)



[Tawa Hockey Club, Wellington, 2nd div... | Items | National Library of New Zealand | National Library of New Zealand](#)

Tawa Hockey Club, Wellington, 2nd division, boys' hockey team of 1959 **Date** 1959

Reference 1/1-035986-F **Description** Photograph taken by Crown Studios of Wellington.

Part of [Crown Studios Ltd :Negatives and prints](#)



Tin drums being sprayed in a drum factory, Tawa, Wellington **Date** 25 Nov 1959

Reference EP/1959/4024-F Part of [Evening post \(Newspaper. 1865-2002\)](#)

[:Photographic negatives and prints of the Evening Post newspaper](#) / [Negatives of the Evening Post newspaper](#)



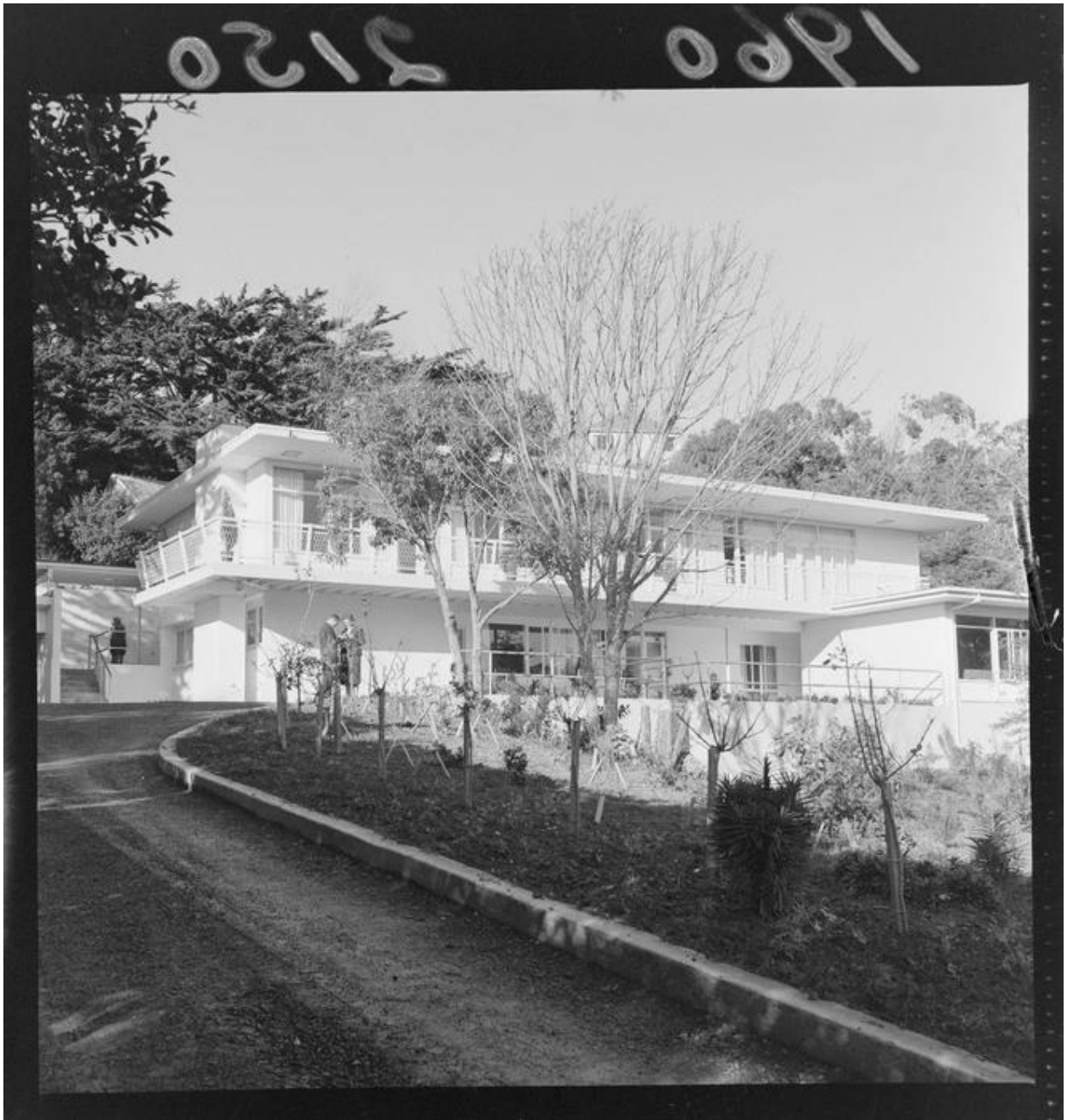
Men making tin drums at a factory, Tawa, Wellington **Date** 25 Nov 1959 **Reference** EP/1959/4023-F **Part of** [Evening post \(Newspaper. 1865-2002\)](#) :[Photographic negatives and prints of the Evening Post newspaper](#) / [Negatives of the Evening Post newspaper](#)



Portrait of unidentified Tawa Borough Councillors, Wellington City [Portrait of unidentified Tawa Borough... | Items | National Library of New Zealand | National Library of New Zealand](#) **Date** 8 Dec 1959 **Reference** EP/1959/4196-FPart of [Evening post \(Newspaper. 1865-2002\) :Photographic negatives and prints of the Evening Post newspaper / Negatives of the Evening Post newspaper](#)



Tawa Rugby Football Club, Wellington, team of 1960 [Tawa Rugby Football Club, Wellington,... | Items | National Library of New Zealand | National Library of New Zealand](#) Date 1960 Reference 1/1-036158-F Part of [Crown Studios Ltd :Negatives and prints](#)



Mormon Latter Day Saints house Duncan Street [Exterior view of a house for visiting... | Items | National Library of New Zealand | National Library of New Zealand](#) **Date** 13 Jun 1960 **Reference** EP/1960/2150-F **Description** Photograph taken for the Evening Post newspaper of Wellington by an unidentified staff photographer. Quantity: 1 b&w original negative(s). Physical Description: Cellulosic film negative, 6.5 x 6.5 cm **Part of** [Dominion Post \(Newspaper\): Photographic negatives and prints of the](#)



[Tawa Cricket Club team](#) | [Items](#) | [National Library of New Zealand](#) | [National Library of New Zealand](#) **Date** 1961 **Reference** 1/1-036217-F [Crown Studios Ltd](#)
:Negatives and prints



Partons New machines at Tawa factory [Partons New machines at Tawa factory | Items | National Library of New Zealand | National Library of New Zealand](#) **Date** 1963
Reference 1/2-213599-F **Part of** [K E Niven and Co :Commercial negatives / Commercial negatives](#) **Date** 1963 **Reference** 1/2-213598-F **Part of** [K E Niven and Co :Commercial negatives / Commercial negatives](#)



[\[Captain?\] of the Tawa Rugby Football... | Items | National Library of New Zealand | National Library of New Zealand](#) [Captain?] of the Tawa Rugby Football Club 1964 team, Mr H G H Thomas **Date** 1964 **Reference** 1/1-034317-F **Description** Photograph taken by Crown Studios of Wellington. Source of descriptive information - Tawa Rugby Football Club uniform, and Mr Thomas, have been identified from 1/1-034318. **Part of** [Crown Studios Ltd :Negatives and prints](#)



Tawa Cricket Club A grade 1965-1966 **Date** 1966 **Reference** 1/1-036686-F

Description Photograph taken by Crown Studios of Wellington. **Part of** [Crown Studios Ltd](#) :Negatives and prints



[Jantzen Factory, Tawa | Items | National Library of New Zealand | National Library of New Zealand](#) **Date** [between ca 1962 and 1965] **Reference** DW-0552-F **Description**
Photograph taken by Duncan Winder.



[Business premises of Jantzen, Tawa, W... | Items | National Library of New Zealand |](#)

[National Library of New Zealand](#) Business premises of Jantzen, Tawa, Wellington

Date [between ca 1962 and 1965] **Reference** DW-1448-F **Part of** [Winder, Duncan,](#)

[1919-1970: Architectural photographs / Architectural photographs](#)



Business of Alex Cowan & Sons Limited, Tawa, Wellington [Business of Alex Cowan & Sons Limited... | Items | National Library of New Zealand | National Library of New Zealand](#) **Date** [between ca 1962 and 1965] **Reference** DW-0829-F **Part of** [Winder, Duncan, 1919-1970: Architectural photographs / Architectural photographs](#)



Premises of Alexander Cowan Ltd, paper merchant, Tawa, machinery [Premises of Alexander Cowan Ltd, pape... | Items | National Library of New Zealand | National Library of New Zealand](#) **Date** [between ca 1962 and 1965] **Reference** DW-0095-F **Description** Photograph taken by Duncan Winder. **Part of** [Winder, Duncan, 1919-1970: Architectural photographs / Architectural photographs](#)



Alex Cowan, paper merchants premises, Tawa **Date** [between ca 1962 and 1970]

Reference DW-5122-F **Part of** [Winder, Duncan, 1919-1970: Architectural photographs](#) / [Architectural photographs](#)



Interior of Carter Merchants (Wellington) Ltd, Tawa [Interior of Carter Merchants \(Wellington\) Ltd](#) | [Items | National Library of New Zealand | National Library of New Zealand](#) **Date** [between ca 1962 and 1970] **Reference** DW-4945-FPartly restricted - Please use surrogate in place of original **Part of** [Winder, Duncan, 1919-1970: Architectural photographs / Architectural photographs](#)



[Fletcher Construction Plant at Tawa | Items | National Library of New Zealand | National Library of New Zealand](#) **Date** 1967 **Reference** 1/2-215681-F **Description** Fletcher Construction Plant at Tawa, photographed by K E Niven and Co of Wellington



[Fletcher Construction, Tawa Plant Site | Items | National Library of New Zealand | National Library of New Zealand](#) **Date** 1967 **Reference** 1/2-215596-F **Description** Fletcher Construction, Tawa plant 2/11/67, photographed by K E Niven and Co of Wellington Description from negative envelope and studio card index. See print. Finding Aids: Photographer's ref no 562/67 F. **Part of** [K E Niven and Co :Commercial negatives / Commercial negatives taken in 1967](#)



[Wallace house, Tawa, Wellington](#) [Wallace house, Tawa, Wellington | Items | National Library of New Zealand](#) | [National Library of New Zealand](#)

Date [ca Feb 1969] **Reference** DW-3780-F **Description** Photograph taken by Duncan

Part of [Winder, Duncan, 1919-1970: Architectural photographs](#) / [Architectural photographs](#)

Format



[Tawa College, 1969 1st XV rugby union... | Items | National Library of New Zealand | National Library of New Zealand](#) Tawa College, 1969 1st XV rugby union team, Wellington **Date** 1969 **Reference** 1/2-196399-F **Description** Photograph taken by Crown Studios of Wellington. **Part of** [Crown Studios Ltd :Negatives and prints](#)



[Anglican church, Tawa, Wellington | Items | National Library of New Zealand |](#)

[National Library of New Zealand](#) **Date** [ca Apr 1970] **Reference** DW-4268-F

Description Photograph taken by Duncan Winder. [Winder, Duncan, 1919-1970:](#)

[Architectural photographs](#) / [Architectural photographs](#)



[Catholic church, Tawa, Wellington | Items | National Library of New Zealand | National Library of New Zealand](#) Catholic church, Tawa, Wellington **Date** ca Apr 1970]

Reference DW-4266-FWinder, Duncan, 1919-1970: [Architectural photographs / Architectural photographs](#)



[Royal New Zealand Institute for the B... | Items | National Library of New Zealand |](#)

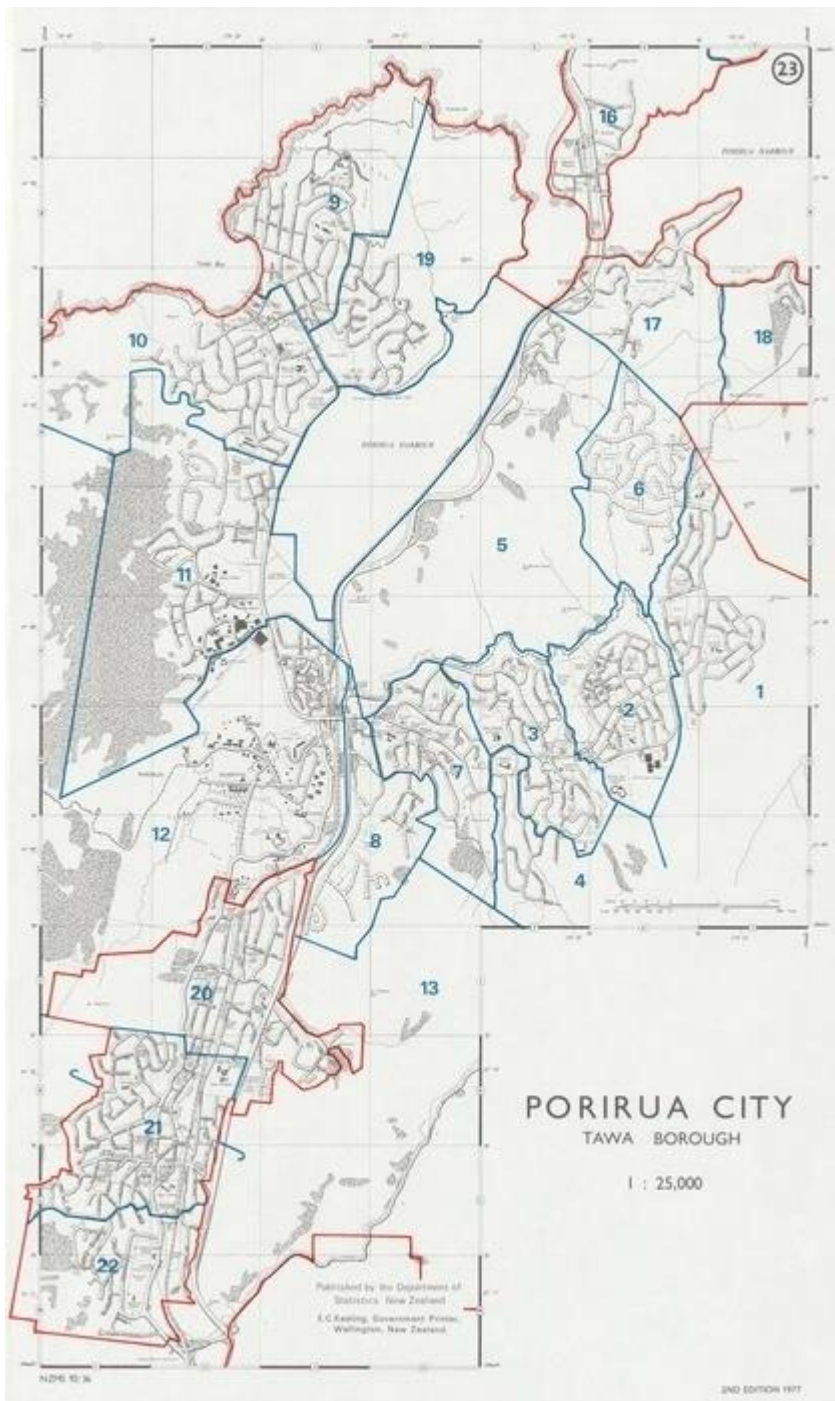
[National Library of New Zealand](#) Royal New Zealand Institute for the Blind building, Tawa **Date** 1973 **Reference** 1/2-226700-F **Description** Blind Institute building taken for the Royal New Zealand Institute for the Blind and G Hugh Sumpter and Associates Ltd in 1973 by K E Niven and Co, commercial photographers of Wellington.

Other - Reference number 349/73. Sumpters Blind institute building , tawa **Part of** [K E](#)

[Niven and Co :Commercial negatives](#) / [Commercial negatives taken in 1973](#)



Tawa College, Wellington, 1st XI cricket team [Tawa College, Wellington, 1st XI cric... | Items | National Library of New Zealand | National Library of New Zealand](#)
Date 1973 **Reference** 1/2-196471-F **Description** Photograph taken by Crown Studios of Wellington. **Part of** [Crown Studios Ltd :Negatives and prints](#)



Date 1977. **By** New Zealand. Department of Lands and Survey; New Zealand. Department of Statistics **Series** NZMS 92 ; 36. **Use/Reproduction** This image may be used, copied and re-distributed free of charge in any format or media. Where the image is redistributed to others the following acknowledgement note should be shown : "Sourced from LINZ. Crown Copyright reserved." **Notes** Archived by the National Library of New Zealand in TIFF. Relief shown by spot heights. Map scanned

at resolution of 600 ppi. Electronic reproduction of Land Information New Zealand original. Wellington, N.Z. : University of Auckland, 2013. Mode of access: World Wide Web. 2nd edition.

Scale 1:25,000 (E 174°48'50"-E 174°53'20"/S 41°05'15"-S 41°09'20"). **Source URL** https://ndhadeliver.natlib.govt.nz/delivery/DeliveryManagerServlet?dps_pid=IE26774704 **Related to** Digital Collection = Kohinga Matihiko 81268192800002836 Alma Collection **Publisher** [Wellington] : published by the Department of Statistics, New Zealand, 1977. **Format** 1 online resource : colour.