

TAWA IMAGES

Series 1

On Pages 36 - 39 is a list of the 35 images and what page they are on.

You can hyper link from most descriptions under the images or the contents Steve Avery 29 January 2026



[Tawa Flat landscape, Wellington | Items | National Library of New Zealand | National Library of New Zealand](#) Date [ca 1930] Reference 1/2-049137-G Description Looking north over the landscape at Tawa Flat, Wellington, circa 1930. Photograph taken by Sydney Charles Smith. Part of [Smith, Sydney Charles, 1888-1972: Photographs of New Zealand](#)



[Sheep farm, Tawa, Wellington | Items | National Library of New Zealand | National Library of New Zealand](#) [193-?] **Reference** 1/2-047584-G **Description** Sheep farm in Tawa, Wellington, taken ca 1930s by Sydney Charles Smith. A stream runs through the centre of the image and there is an unsealed road in the foreground. **Part of** [Smith, Sydney Charles, 1888-1972: Photographs of New Zealand](#)



[Tawa landscape](#) | [Items](#) | [National Library of New Zealand](#) | [National Library of New Zealand](#) **Date** [ca 1930] **Reference** 1/2-047588-G **Description** Tawa landscape, circa 1930. Photograph taken by Sydney Charles Smith



[Farmland, Tawa, Wellington | Items | National Library of New Zealand | National Library of New Zealand](#) **Date** [193-?] **Reference** 1/2-047585-G **Description** Farmland in Tawa, Wellington, taken ca 1930s by Sydney Charles Smith. Several buildings can be seen in the foreground and there are hills in the background. Other - See 1/2-047584 for the view to the left of this image **Part of** [Smith, Sydney Charles, 1888-1972: Photographs of New Zealand](#)



[House and land on Tawa Flat, Wellington | Items | National Library of New Zealand |](#)

[National Library of New Zealand](#) **Date** 1932 **Reference** PAColl-7796-53 **Description**

View of a house and surrounding farm land on Tawa Flat, Wellington. Photograph

taken in 1932 by an unidentified photographer for the Evening Post. Inscriptions:

Verso - top ver gelatin print 19.6 x 15.8 cm **Part of** [Evening post \(Newspaper. 1865-2002\)](#) :[Photographic negatives and prints of the Evening Post newspaper / Evening Post original photographic prints and postcards, from file print collection, Box 4](#)

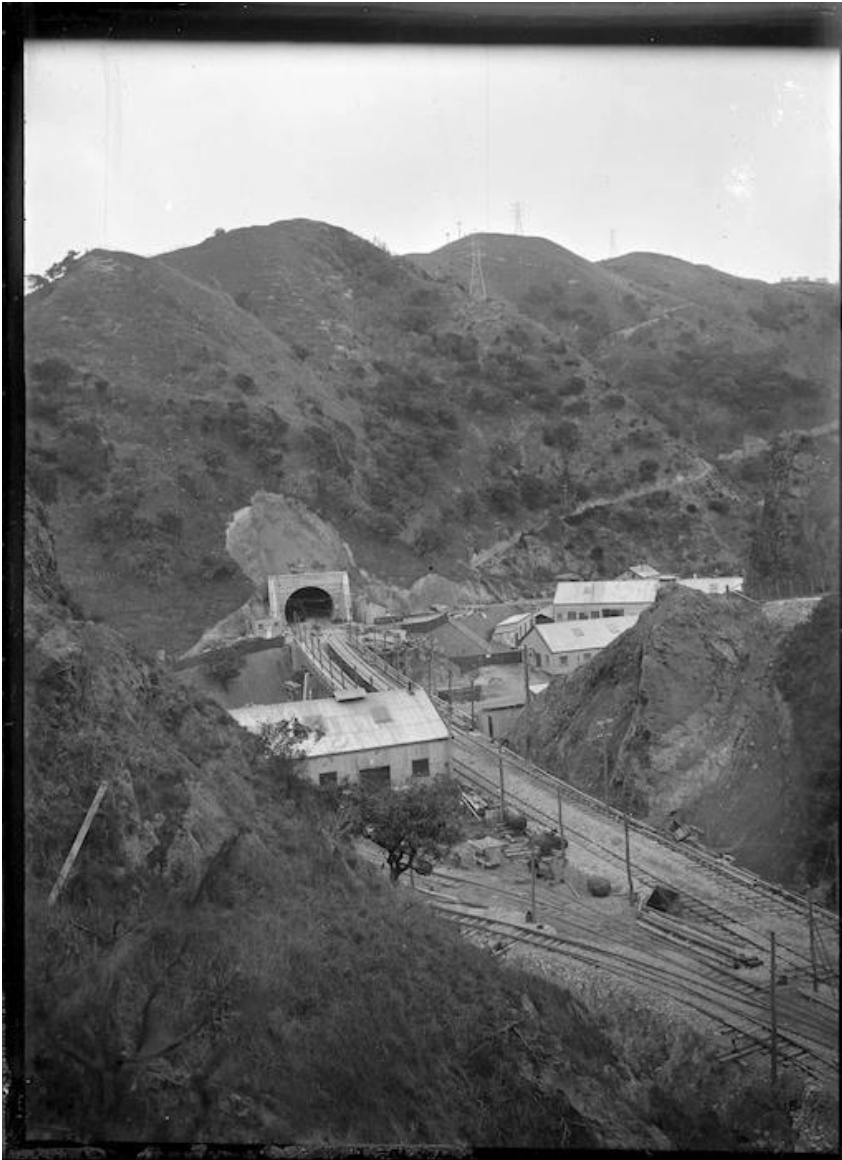


[Interior of a railway tunnel under co... | Items | National Library of New Zealand | National Library of New Zealand](#) **Date** [ca 1930s] **Reference** MNZ-0725-1/4-F **Description**

Interior of a railway tunnel under construction at Tawa Flat, Wellington, circa 1930s. Shows workmen. Taken by an unidentified photographer. Published in 'Making New Zealand', vol 2, no 17, page 16 with the caption 'Constructing a tunnel on the Tawa Flat deviation, which now gives better access to Wellington than did the previous route through Ngaio and Johnsonville.' **Part of** [Making New Zealand :Negatives and prints from the Making New Zealand Centennial collection](#)



[Newly constructed railway tunnel on t... | Items | National Library of New Zealand | National Library of New Zealand](#) **Date** [ca 3 Nov 1933] **Reference** PAColl-9150-08 **Description** Looking out from a newly constructed railway tunnel on the main trunk line at Tawa Flat, Wellington. Shows the view from No 4 portal, the Glenside end of the Tawa Flat deviation tunnels, showing two of the electric engines used for the haulage of spoil and construction material. Photograph taken circa 3 November 1933 by an unidentified photographer. Other - Note on back of print read: "Wgtn Studio Photo" Cataloguer is unsure what this means. Possibly not an Evening Post staff photograph. **Part of** [Evening post \(Newspaper. 1865-2002\) :Photographic negatives and prints of the Evening Post newspaper / Evening Post photographic prints](#)

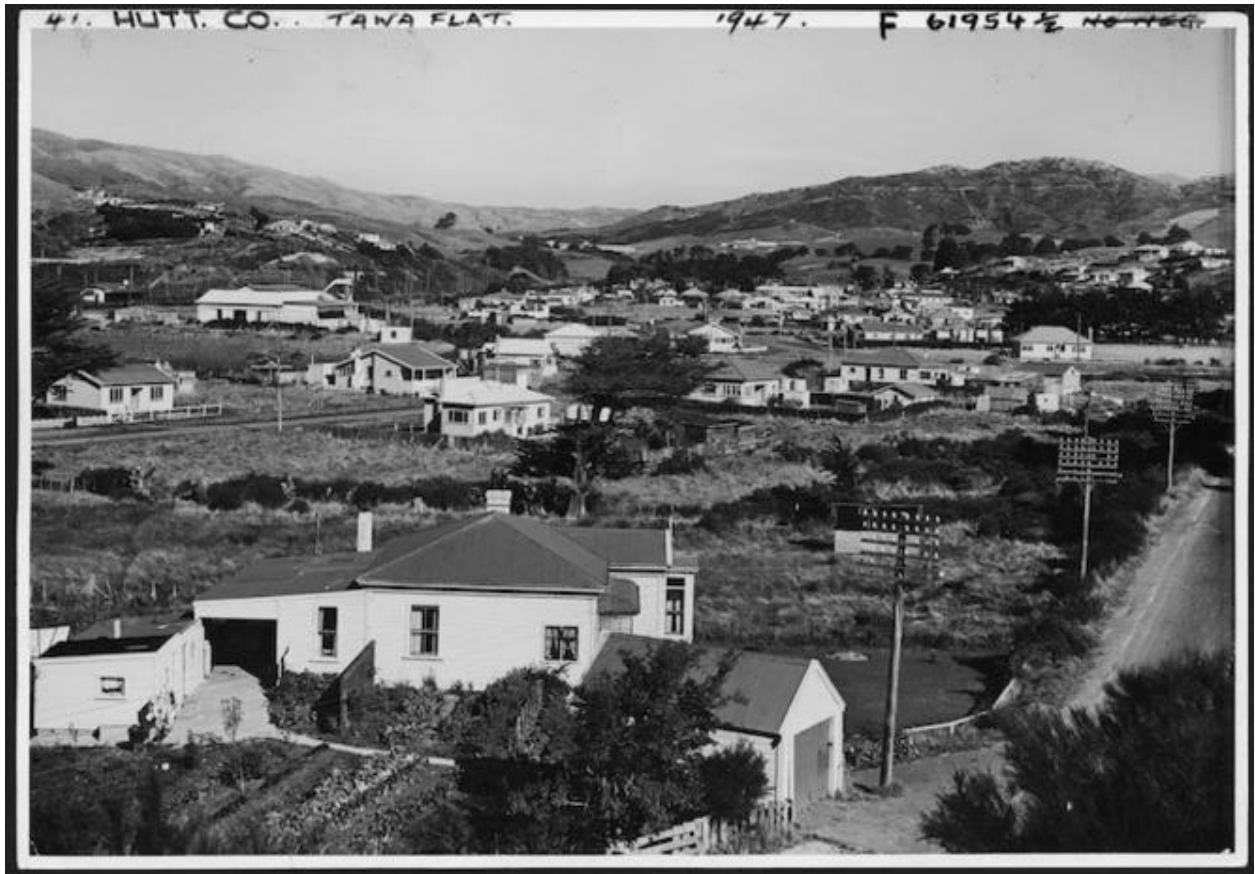


[View of the north end of the Tawa Tun... | Items | National Library of New Zealand | National Library of New Zealand](#) **Date** Between 1920s and 1930s **Reference** APG-0897-1/2-G **Description** View over Ngauranga Gorge, showing the north end of the No. 1 Tawa Tunnel on the North Island Main Trunk Line. A track winds up the hill leading to the Public Works Department construction houses at Khandallah. See back of file print. Photograph taken by Albert Percy Godber. The date range for this item was changed as a result of researcher feedback 31 March 2016. Inscriptions: Album page - Paekakariki. 1/1/10. Quantity: 1 b&w original negative(s). **Part of** [Godber, Albert Percy, 1875-1949 :Collection of albums, prints and negatives](#)



[Tawa Flat](#) | [Items](#) | [National Library of New Zealand](#) | [National Library of New Zealand](#) **Date** [ca 1940] **Reference** PAColl-5482-032 **Description**

A view over Tawa Flat. Photograph taken by photographer from the Evening Post ca 1940s. note on back of file print reads: site for new Tawa Flat Station



[Tawa Flat, Wellington - Photograph ta... | Items | National Library of New Zealand |](#)

[National Library of New Zealand](#) **Date** [ca 20 Aug 1947] **By** Buckley, John David, 1901-1983 **Reference** PAColl-8163-40 **Description** View overlooking suburb of Tawa Flat in Wellington showing houses, roads, railway station, and other land-use.

Photograph taken in April 1947, by J D Buckley for the Free Lance. Inscriptions:
 Verso - top centre - Main road on right. New military road across hill in back built during war. Borstal (?) in middle distance. Big growth of housing mostly privately built. Railway Station extreme left. Harry Duff's [?] factory opposite. Rail fully electrified and electric trains to Paekak;
 Verso - bottom right - J D Buckley, / 20 Collingwood St., / Ngaio, Wellington, N.Z.;
 Verso - bottom right - Rcd 23/6/47;
 Verso - bottom right - P20/8/47;
 Verso - bottom left - Compo=right / 9 5/8 x 3" / 3/16" gutter;
 Verso - bottom left - 14 April [del: May] 1947

Quantity: 1 b&w original photographic print(s). **Part of** [New Zealand Free Lance : Photographic prints and negatives](#)



[Bridge at Tawa, Wellington | Items | National Library of New Zealand | National Library of New Zealand](#) **Date** [ca 22 November 1950] **Reference** 114/226/12-G **Description** Two cars on a bridge which is part of the new highway at Tawa. Photographed circa 22 November 1950 by an Evening Post photographer. Location identified by researcher as being Tawa not Johnsonville as described. Corrected July 2016.



[Aerial photograph of the Takapu Road ... | Items | National Library of New Zealand | National Library of New Zealand](#) **Date** [ca 1951-1954] **Reference** EP/1955/0634-F **Description** Photograph taken for the Evening Post newspaper of Wellington by an unidentified staff photographer. Aerial photograph of the construction of the Johnsonville-Porirua motorway showing the Takapu Road intersection and Arohata Women's Prison. Negative is listed in the Evening Post 1955 register, but this part of the motorway was opened in December 1954 and the image appears to show **Part of** [Evening post \(Newspaper. 1865-2002\) :Photographic negatives and prints of the Evening Post newspaper / Negatives of the Evening Post newspaper](#)



[Tawa Flat, Wellington | Items | National Library of New Zealand | National Library of New Zealand](#)

Date 19 Nov 1951 **Reference** WA-29837-F **Description** Aerial view of Tawa Flat, [Attribution 4.0 International \(CC BY 4.0\)](#) **Part of** [Whites Aviation Ltd: Photographs / Main sequence](#)



[Tawa Tennis Club float in procession ... | Items | National Library of New Zealand | National Library of New Zealand](#) **Date** 1955 **Reference** EP/1955/2358-F **Description** Photograph taken for the Evening Post newspaper of Wellington by an unidentified staff photographer. **Part of** [Evening post \(Newspaper. 1865-2002\)](#) :Photographic negatives and prints of the Evening Post newspaper / [Negatives of the Evening Post newspaper](#)



[Tawa Flat, Wellington | Items | National Library of New Zealand | National Library of New Zealand](#) **Date** May 1957 **Reference** WA-28573-F **Description** Aerial view of Tawa Flat, Wellington, and surrounding hills. Photographed by Whites Aviation in May 1957.

Part of [Whites Aviation Ltd: Photographs / Main sequence](#)



[St Peter's Anglican church under cons... | Items | National Library of New Zealand | National Library of New Zealand](#) Date 1957 Reference EP/1957/3475-F Description Photograph taken for the Evening Post newspaper of Wellington by an unidentified staff photographer. Access restrictions Part of [Evening post \(Newspaper. 1865-2002\)](#) :Photographic negatives and prints of the Evening Post newspaper / [Negatives of the Evening Post newspaper](#)



Date 1955 **Reference** EP/1955/1767-F **Description** Photograph taken for the Evening Post newspaper of Wellington by an unidentified staff photographer.
Quantity: St Christophers Three light [Three light stained glass window's at... | Items | National Library of New Zealand | National Library of New Zealand](#)



Date 3 Dec 1959 **Reference** WA-51943 **Description** Aerial photograph taken by Whites [Attribution 4.0 International \(CC BY 4.0\)](#)



[Linden in foreground and Tawa Borough... | Items | National Library of New Zealand](#)

[| National Library of New Zealand](#) Date 3 Dec 1959 Reference WA-51943

Description Aerial photograph taken by Whites Aviation.

[Attribution 4.0 International \(CC BY 4.0\)](#)



[Aerial view of Tawa, Wellington | Items | National Library of New Zealand | National Library of New Zealand](#) **Date** June 1960 **Reference** 1/2-033228-F **Description**

Aerial view of Tawa, Wellington, showing Tawa College under construction and surrounding houses, taken June 1960 by an unidentified photographer for the National Publicity Studios. Caption - Note on back of file print reads: "M.O.W. Aerial - Wellington.



[Volunteers who have been painting St ... | Items | National Library of New Zealand | National Library of New Zealand](#) **Date** 6 Aug 1960 **Reference** EP/1960/2825-F
Description Volunteers who have been painting St Francis Xavier Catholic Convent school, 6 August 1960. Photograph taken at the school by an unidentified Evening Post staff photographer. Published in the Evening Post newspaper, 8 August 1960.



[Housing subdivision Oxford Sunshine u... | Items | National Library of New Zealand](#)
[National Library of New Zealand](#) Date June 1960 Reference 1/2-033227-F

Description Aerial view of Tawa, Wellington, showing the subdivision Oxford Sunshine under construction, taken June 1960 by an unidentified photographer for the National Publicity Studios. Streets shown are probably Redwood Avenue and Main Road. The railway line can be seen in the foreground. Note on back of file print reads: "M.O.W. Aerial - Wellington. 'Oxford Sunshine' housing sub-division at Tawa for privately owned homes."



[Aerial view of the Wellington suburbs... | Items | National Library of New Zealand | National Library of New Zealand](#) **Date** Nov 1962 **Reference** EP/1962/3370-F **Description** Aerial view of the Wellington suburbs Linden and Tawa, taken in November 1962. Photographed for the Evening Post by an unidentified staff photographer. Other - Published in the Evening Post newspaper, in November 1962 Quantity: 1 b&w original negative(s). Alternative form available: Print in Turnbull Library Pictures Evening Post illustrations file at cabinet 12, drawer 2 at Tawa/Linden! **Part of** [Dominion Post \(Newspaper\)](#): [Photographic negatives and prints of the Evening Post and Dominion newspapers](#) / [Further negatives of the Evening Post newspaper](#)



[Tawa College, Wellington | Items | National Library of New Zealand | National Library of New Zealand](#) Date 8 May 1963 Reference WA-60339-F Description Aerial photograph taken by Whites Aviation. [Attribution 4.0 International \(CC BY 4.0\)](#)



Reference 1/2-196402-F **Description** Photograph taken by CroDate 1969wn Studios of | [Tawa College, boys' hockey team, with...](#) | [Items](#) | [National Library of New Zealand](#) | [National Library of New Zealand](#)
Part of [Crown Studios Ltd](#) :Negatives and prints



Date 1970 **Reference** 1/2-225271-F **Description** Group portrait at St Christopher's Anglican church, Tawa, taken for St Christopher's Anglican church, Tawa in 1970 by K E Niven and Co, commercial photographers of Wellington. **Part of** [K E Niven and Co :Commercial negatives / Commercial negatives taken in 1970](#)



Date [ca Apr 1970] **Reference** DW-4267-F **Description** Photograph taken by Duncan Winder. **Part of** [Winder, Duncan, 1919-1970: Architectural photographs / Architectural](#)



[Steam train at Tawa Railway Station | Items | National Library of New Zealand | National Library of New Zealand](#) **Date** 1972 **Reference** 1/4-020370-F **Description** Steam train at Tawa Railway Station, and groups, including schoolboys, standing on the platform. Photograph taken in 1972 for the Evening Post newspaper by an unidentified photographer. **Part of** [Evening post \(Newspaper. 1865-2002\)](#) :[Photographic negatives and prints of the Evening Post newspaper](#) / [Negatives of the Evening Post newspaper](#)



[Fiat Bambina, and owner Geoff Brader,... | Items | National Library of New Zealand | National Library of New Zealand](#) Date [ca 1 Jan 1973] Reference EP/1973/0214/12a-F Description Fiat Bambina car and owner Geoff Brader, from Tawa, Wellington. The 18 inch key on the back makes it look like a wind-up, mechanical toy. Photographed circa 17th January 1973 by an Evening Alternative form available: Print in Turnbull Library Pictures Evening Post illustrations file at cabinet 16, drawer 1, at Motor vehicles-vintage cars and car aubtions, classic cars Partly restricted - Please use surrogate in place of original Part of [Dominion Post \(Newspaper\): Photographic negatives and prints of the Evening Post and Dominion newspapers / Fiat Bambina, and owner Geoff Brader, Tawa, Wellington](#) Part of [Evening post \(Newspaper. 1865-2002\) :Photographic negatives and prints of the Evening Post newspaper / Negatives of the](#)



[Group on the site of the James Laurie... | Items | National Library of New Zealand | National Library of New Zealand](#) **Date** 14 Jan 1977 **Reference** EP/1977/4851/14-F **Description** Group on the site of the James Laurie subdivision, at the back of Chester Road, Tawa, Wellington. From left: Porirua's city engineer, Mr R Blackman, Tawa's borough engineer (Mr R G Williams), the Mayor of Tawa (Mr E M H Kemp), the Mayor of Porirua (Mr Whitford Brown), and a resident (Mr A F McLeod). Mr Blackman is answering a question about the subdivision. Photograph taken 14 January 1977 by an unidentified Evening Post staff photographer. Publication note - Published in the Evening Post, 14 January 1977. Alternative form available: File print in Evening Post illustrations file at cabinet 12, drawer 2, at Municipal Tawa/Linden **Part of** [Dominion Post \(Newspaper\): Photographic negatives and prints of the Evening Post and Dominion newspapers / Group on the site of the James Laurie subdivision, Tawa, Wellington](#)



[Laundry area inside the Satterthwaite... | Items | National Library of New Zealand | National Library of New Zealand](#) **Date** [ca 9 Jun 1984] **Reference** EP/1984/2679/32-F

Description

Laundry area inside the Satterthwaite's house in Tawa. Photographs taken circa 9 June 1984 by an unidentified staff photographer for the Evening Post. **Part of** [Dominion Post \(Newspaper\): Photographic negatives and prints of the Evening Post and Dominion newspapers / Laundry and mezzanine areas inside the Satterthwaite's house in Tawa](#)

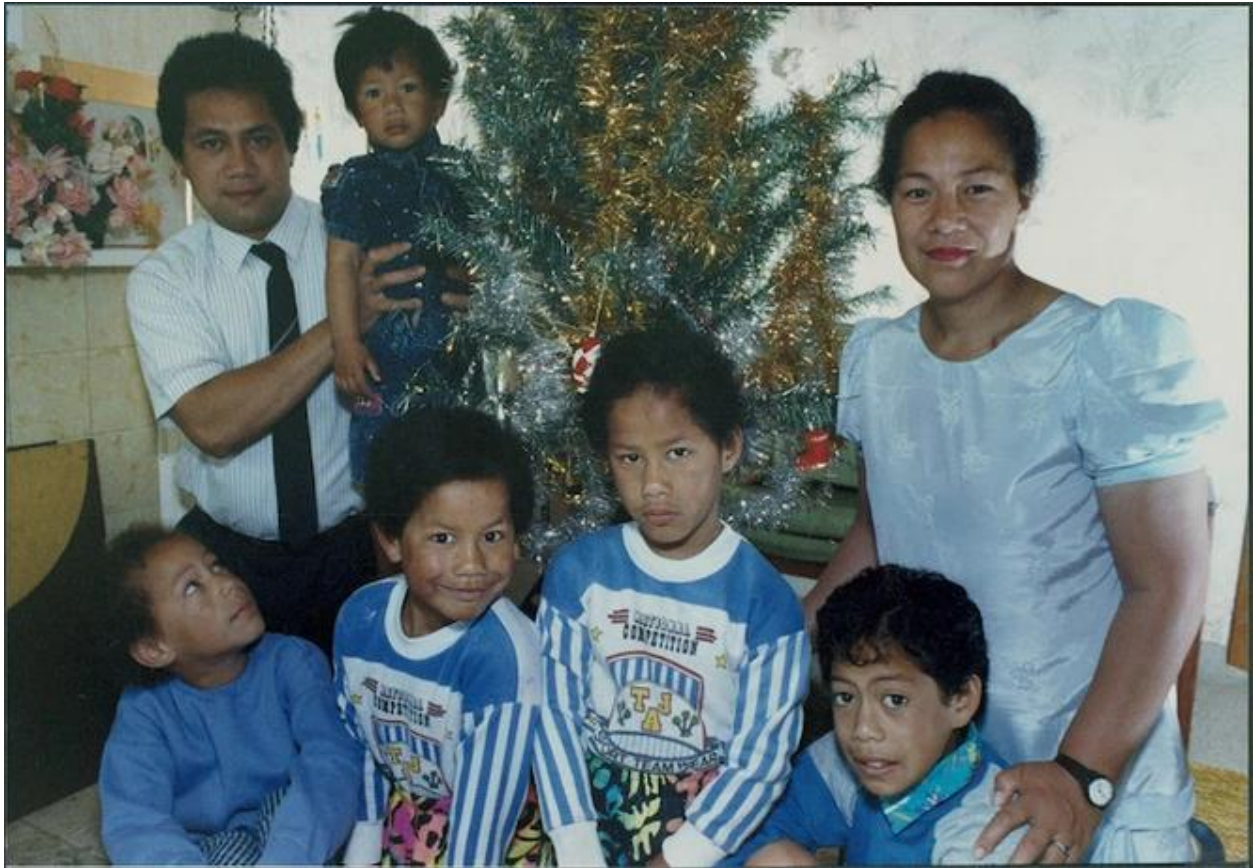


[Dining room of the Satterthwaite's ho...](#) | [Items](#) | [National Library of New Zealand](#) | [National Library of New Zealand](#) **Date** [ca 9 Jun 1984] **Reference** EP/1984/2681/30-F **Description** Dining room and mezzanine floor of the Satterthwaite's house in Tawa. Photograph taken circa 9 June 1984 by an unidentified staff photographer for the Evening Post. Other - Published in the Evening Post, 9 June 1984 Quantity: 1 b&w original negative(s) (Individual image on negative strip). Print in Evening Post illustrations file in Turnbull Library Pictures, cabinet 9, drawer 4, at Industry-Houses 1980s. **Part of** [Dominion Post \(Newspaper\): Photographic negatives and prints of the Evening Post and Dominion newspapers](#) / [Dining room of the Satterthwaite's house in Tawa](#)



[Food columnist David Burton demonstra... | Items | National Library of New Zealand | National Library of New Zealand](#) Date 20 February 1987 Reference EP/1987/0836/12-F

Description Food columnist David Burton demonstrating cookery techniques at Arohata Prison, Tawa, Wellington. Photograph taken 20 February 1987 by an Evening Post staff photographer. Part of Dominion Post (Newspaper): Photographic negatives and prints of the Evening Post and Dominion newspapers / Food columnist David Burton demonstrating cookery techniques at Arohata Prison



[Talamaivao family of Tawa with their ... | Items | National Library of New Zealand |](#)

[National Library of New Zealand](#)

Date 21 December 1991 **Reference** EP-Ethnology-

Polynesian-01 **Description** Original Evening Post caption reads: "The Talamaivao family of Tawa and their bare Christmas tree - Ameto with namesake, 2, and from left Sa, 7, twins Vaeoso and Vaelaa, 6, Amsy, 9, and Vaipalolo. There will be few presents this Christmas for the Talamaivao family of Tawa. All their spare money is being saved for their families in Western Samoa." Photograph taken on 21 December 1991 by an Evening Post staff photographer. Arrangement: Negative at EP/1991/4274-F

In December 1991 Cyclone Val hit Samoa. Quantity: 1 colour original photographic print(s). **Part of** [Dominion Post \(Newspaper\): Photographic negatives and prints of the Evening Post and Dominion newspapers / Polynesians in New Zealand](#)



[Tawa shops](#) | [Items](#) | [National Library of New Zealand](#) | [National Library of New Zealand](#) **Date** [ca 2000] **Reference** Pan-2923 **Description** Panoramic photograph negative of woman and a dog outside Sometime Ago antique shop with adjacent fish and chip shop, Tawa, circa 2000. Taken by Clayton Tume. **Part of** [Tume, Clayton, fl 2000-2015 :Panoramic photographs of Wellington Region](#)

TAWA IMAGES

Series 1

Contents

- 1 Tawa Flat landscape, Wellington National Library of New Zealand Date [ca 1930]
- 2 Sheep farm, Tawa, Wellington | National Library of New Zealand [193-?]
- 3 Tawa landscape National Library of New Zealand Date [ca 1930]
- 4 Farmland, Tawa, Wellington National Library of New Zealand Date [193-?]
- 5 House and land on Tawa Flat, Wellington National Library of New Zealand Date 1932
- 6 Interior of railway tunnel National Library of New Zealand Date [ca 1930s]
- 7 Newly constructed railway tunnel National Library of New Zealand Date [ca 3 Nov 1933]
- 8 View of the north end of the Tawa Tunnel| National Library of New Zealand Date Between 1920s and 1930s
- 9 Tawa Flat National Library of New Zealand Date [ca 1940]
- 10 Tawa Flat, Wellington National Library of New Zealand Date [ca 20 Aug 1947]
- 11 Bridge at Tawa, Wellington National Library of New Zealand Date [ca 22 November 1950]
- 12 Aerial photograph of the Takapu Road ... | Items | National Library of New Zealand National Library of New Zealand Date ca 1951-1954]
- 13 Tawa Flat, Wellington National Library of New Zealand Date 19 Nov 1951 Reference WA-29837-F Description Aerial view of Tawa Flat,
- 14 Tawa Tennis Club float in procession National Library of New Zealand Date 1955
- 15 Tawa Flat, Wellington National Library of New Zealand Date May 1957
- 16 St Peter's Anglican church under construction National Library of New Zealand Date 1957

- 17 Date 1955 Reference EP/1955/1767-F Description Photograph taken for the Evening Post newspaper St Christophers Three light stained glass window's at... | Items | National Library of New Zealand | National Library of New Zealand**
- 18 Date 3 Dec 1959 Reference WA-51943 Description Aerial photograph taken by Whites**
- 19 Linden in foreground and Tawa Borough National Library of New Zealand Date 3 Dec 1959**
- 20 Aerial view of Tawa, Wellington |National Library of New Zealand Date June 1960**
- 21 St Francis Xavier Volunteers who have been paintingNational Library of New Zealand Date 6 Aug 1960**
- 22 Housing subdivision Oxford SunshineNational Library of New Zealand Date June 1960**
- 23 Aerial view of the Wellington suburbs Linden and Tawa . National Library of New Zealand Date Nov 1962 Reference EP/1962/3370-F Description**
- 24 Tawa College National Library of New Zealand Date 8 May 1963**
- 25 National Library of New Zealand Tawa College, boys' hockey team, with... | Items | National Library of New Zealand | National Library of New Zealand Part of Crown Studios Ltd :Negatives and prints**
- 26 Date 1970 Reference 1/2-225271-F Description Group portrait at St Christopher's Anglican church, Tawa, taken for St Christopher's Anglican church, Tawa in 1970 by K E Niven and Co, commercial photographers of Wellington.**
- 27 St Francis Xavier Date [ca Apr 1970] Reference DW-4267-F Description Photograph taken by Duncan Winder.**
- 28 Steam train at Tawa Railway Station National Library of New Zealand Date 1972**
- 29 Fiat Bambina, and owner Geoff BraderNational Library of New Zealand Date [ca 1 Jan 1973]**
- 30 Group on the site of the James Laurie Subdivision. || National Library of New Zealand Date 14 Jan 1977 Includes M Kemp**
- 31 Laundry area inside the Satterthwaite house.| National Library of New Zealand Date [ca 9 Jun 1984]**
- 32 Dining room of the Satterthwaite's house.National Library of New Zealand Date [ca 9 Jun 1984]**

33 Food columnist David Burton demonstration. National Library of New Zealand Date 20 February 1987

34 Talamaivao family of Tawa with their Christmas Tree. | National Library of New Zealand Date 21 December 1991

35 Tawa shops National Library of New Zealand Date [ca 2000]

The images are all from the National Library. You can copy this item for personal use, share it, and post it on a blog or website. It cannot be used commercially without permission, please [ask us for advice](#). If reproducing this item, please maintain the integrity of the image (i.e. don't crop, recolour or overprint it), and ensure the following credit accompanies it:

Steve Avery 29 January 2026